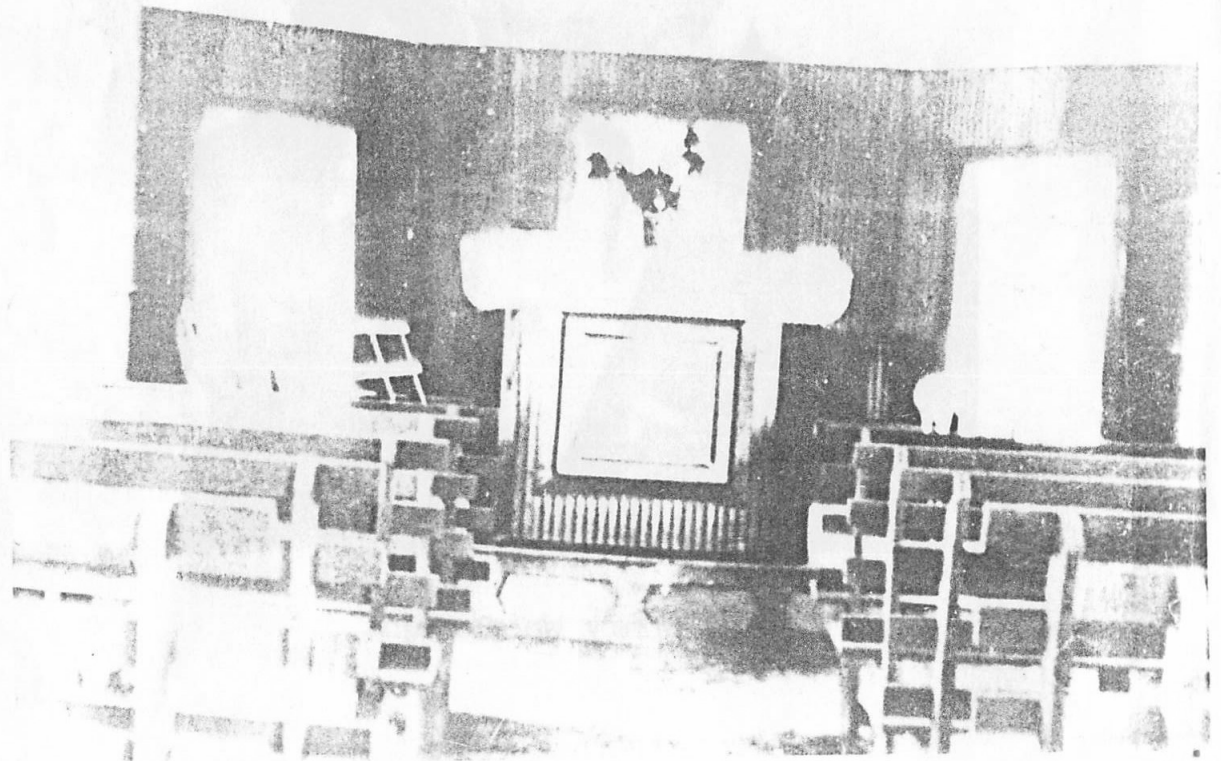


"Society of Sisters"
Waveland Ward



George Henry Wainwright



First chapel in Edwardsville around 1920

Tues. Oct. 27 - 1936

By ~~Stam~~ ^{Stam}

Minutes of the Relief Society
called to order at 2:00 p.m.

Presiding Sis Ellen E. Linder

Conducting Ellen E. Linder

Commencing by singing no 152 Let us all Praise our

Prayer by ~~Bro. Geo. H. Wainwright~~ ^{Sis. Edna J. Lane}

Singing practice no 226 That Beautiful
Land no. 194 Sweet Sabbath Day -

Roll - 4 members 2 visitors present
minutes read & approved -

Lesson - The Prevention of Crime

Closing Song 233 Lord dismiss us.

~~Bene.~~ Sis Edna J. Lane

Bene, Bro. Geo. H. Wainwright

Tues. Oct. 20 - 1936

Minutes of the Bay St Louis
Relief Society called to order
at 2⁰⁰ PM

Presiding Sis Ellen E. Ladner

Conducting Sis Ellen E. Ladner

Commencing by singing No 218 Grant your Blessings

Prayer by Sis Hattie M. Puthyard

Singing Practice No 16 Come Come ye Saints

Roll called. 3 members present 2 Visitors present

Minutes read and approved -

Lesson taught ~~at~~ literature - life of Alice James

Closing by Song No 97

Palmer -

Ben. by Sis Lillian Jones

Written by Sis Ellen E. Ladner

The following articles as
named were sent from
Bay St Louis, Relief Society
Branch Miss. District
to Columbus Miss. To
be placed in the
Bazaar given there to
celebrate the 96th birth
day of Relief Society the
only auxiliary organization
organized by the Prophet
Joseph Smith March 17, 1842.

Hand made pieces
donated and each made
accordingly.

Sisters Ellen E. Ladner
yarn 39[¢], Lillian Ladner
pair pillow cases 79[¢], Laura A.
Ladner small girl's dress, 49.
Kate M. Osbourn dresser scarf 45

Emergency Baby
Layette.

11 Diapers

2 ps Socks.

2 Sought gowns.

2 Slips.

5 dresses 7.

3 Blankets

2 Pads.

4 Wash Cloths

5 undershirts

3 bibs

2 Co. jackets.

1 Band.

BEDDING DONATED TO EUROPEAN SAINTS BY THE RELIEF SOCIETY

Date June 12 1945

Bayou La Poudre Ward Southern States Mission Stake

This list is to be compiled in triplicate by the ward Relief Society president. One copy is to be retained in the ward and placed in the Ward Record Book at the end of the ward history as part of the history for 1945. Two copies are to be sent to the stake Relief Society president. The stake Relief Society president will keep one of the two lists, placing it in the Stake Record Book at the end of the stake history as part of the history for 1945. The third list is to be sent at once to the General Board of Relief Society, 28 Bishop's Building, Salt Lake City 1, Utah.

KIND (Quilt or Blanket) List each article separately	BLANKET COST	QUILTS				Indicate whether article paid for by Relief Society, bishop or Church Welfare
		Kind of Bat -- (All wool, part wool, or cotton)	Cost of Bat	Estimated cost of material, thread, etc.	Estimated cost of sewing service	
Material top & lining	Quilt	Cotton	71	2.60	Service	by Relief Society
Material top & lined sack lining	Quilt	Cotton	71	.80	donated	Society
Material top & lining	Quilt	Cotton	71	1.50	"	"
Material sack top & lining	Quilt	Cotton	71	1.00	"	"
Material top & lined sack lining	Quilt	Cotton	71	.75	"	"
Material top & Print lining	Quilt	Cotton	71	1.25	"	"
7				5		
8						
9						
10						
11						
12						

Signature of Relief Society Ward President: Allen E. Ladner

BRANCH RELIEF SOCIETY MONTHLY REPORT
To be mailed by the 2nd of each month

BRANCH _____ MONTH OF May 1949 DATE REPORTED June 1.

1. Number of women enrolled.....	<u>6</u>
2. Number of meetings held.....	<u>4</u>
3. Average attendance.....	<u>3</u>
4. Investigators present at weekly meetings (total).....	_____
5. Number of new members admitted during the month.....	_____
6. Number of executive meetings held during month.....	_____
7. Number of prayer meetings held during month.....	_____
8. Cash evaluation of merchandise on hand.....	<u>21.50</u>
9. Average No. of Relief Society women attending sacrament mtgs.....	_____
10. Number of Relief Society Teachers.....	_____
11. Number of visits made by Relief Society Teachers.....	_____
12. Red Cross Work: Hours spent _____ No. of Women.....	_____
13. Number of visits by District Supervisors.....	_____
14. Number of magazine subscriptions.....	_____

ANNUAL FUND:
 Bal. on hand beginning of Mo. _____
 Funds received during month _____
 Funds disbursed during month _____
 Bal. on hand at end of month _____

GENERAL FUND:
 Bal. on hand beginning of Mo. 146.
 Funds received during month 80
 Funds disbursed during month 92.
 Bal. on hand at end of month 208

MAKE IN TRIPLICATE
 1st copy - District Secretary
 2nd copy - Retain in Relief Society
 3rd copy - Branch President

CAMPANILE FUND:
 Bal. on hand beginning of Mo. _____
 Funds received during month _____
 Funds disbursed during month _____
 Bal. on hand at end of month _____

USE BACK OF PAGE FOR REMARKS

Branch Relief Society President

Address _____
Lillian Jones
 Branch Secretary of Relief Society

Address _____
Ray St. Louis
 Address _____

over

Relief Society
of the

Church of Jesus Christ of Latter-day Saints

Certificate of Achievement

Issued by the
General Board of Relief Society

to Bayou La Croix Branch
for contributing its quota toward the erection of the
Relief Society Building

DATED AT SALT LAKE CITY, UTAH

June 28, 1918



Bea S. Spafford
Marianne C. Sharp
Velma N. Simonson

GENERAL PRESIDENCY

LIST OF CLOTHING DONATED

Baptist Le Croy Branch *Southern States* Mission

In deciding in what category to place the articles, list baby things up to 2-year olds; children's from 2-18 years; men's and women's from 18 years on.

No.	FOR MEN	No.	FOR WOMEN	No.	FOR CHILDREN	No.	FOR BABIES
1	Bathrobes		Aprons		Bandannas		Bathrobes
2	Bedroom Slippers		Bedroom Slippers		Bathrobes		Blankets
3	Caps		Blouses		Bedroom Slippers		Baby Buntings
4	Coveralls		Coats	1	Blouses		Bands (knit)
5	Galoshes	3	Dresses (no formal ones)		Caps (Snow Caps)		Bedroom Slippers
6	Gloves		Galoshes	2	Coats		Bonnets
7	Handkerchiefs		Gloves	10	Dresses		Boots
8	Jackets		Handkerchiefs		Galoshes (Boots)		Coats
9	Mufflers		House Dresses		Gloves (Mittens)		Diapers
10	Overalls		Jackets		Handkerchiefs		Dresses
11	Overcoats		Kimonos (Housecoats)		Jackets		Gloves (Mittens)
12	Pajamas	1	Nightgowns (Pajamas)		Kimonos (Housecoats)		Kimonos
13	Rubbers		Rubbers		Leggings		Leggings
14	Shirts		Scarfs		Mufflers (Scarfs)		Nightgowns
15	Shirts (knit)		Shawls		Nightgowns		Pajamas
16	Shoes	1	Shoes (no evening slippers)	1	Overalls (Levis)		Petticoats (Slips)
17	Slacks		Slacks		Pajamas		Rompers
18	Socks (pair)		Slips (Petticoats)		Panties		Sacques
19	Suits		Stockings (pair)		Rubbers		Shirts (knit)
20	2-piece	1	Suits	2	Shirts (boys')		Shoes
21	3-piece		2-piece	1	Shoes		Shawls
22	Sweaters		3-piece	5	Skirts		Snow Suits
23	Ties		Sweaters		Slacks (girls')		2-piece
24	Trousers		Underwear (Brassieres, Shirts, Bloomers)		Slips (Petticoats)		3-piece
25	Underwear (not garments)		Wool Shoulderettes		Snow Suits		Socks (pair)
26					2-piece		Stockings (pair)
27					3-piece		Sweaters
28					Socks (pair)		
29					Stockings (pair)		
30				1	Suits		
31					2-piece		
32					3-piece		
33				1	Sweaters		
34					Trousers (boys')		
35					Underwear		

Signature of Relief Society President *Ellen E. Padon*

CHURCH OF JESUS CHRIST OF LATTER-DAY SAINTS

OFFICE OF THE
SOUTHERN STATES MISSION
485 NORTH AVENUE, N. E.
ATLANTA 5, GA.

ALBERT CHOULES
MISSION PRESIDENT

PHONE AT. 4221

March 3, 1950.

TO THE RELIEF SOCIETY DISTRICT & BRANCH PRESIDENTS:

Dear Sisters:

We have a little over two month left of our outlined work for the year 1949-50. This has been a wonderful year so far. You have accomplished much and if you continue on with the same co-operative attitude and have a desire to grow and progress in your organizations, there is no doubt but what at the end of the year you will look back and feel that you have gained a great deal from all that has taken place.

By way of suggestion, I would like to enumerate some of the accomplishments of some of the Branches, and if they are workable in your Branch it would be a good thing to use them.

Self-improvement talks, which were assigned one or two weeks in advance.

Study of grammar and public speaking, to help the sisters express themselves better when on their feet in public.

Home renovating. Cleaning thoroughly their homes and painting where needed.

Home-making. Making their homes more beautiful for their families and friends.

Serving banquets and luncheons for different organizations at Union Meetings & Conferences.

Rummage sales, selling Christmas cards and Gift wrappings, and having Bazaars.

One Branch did something out of the ordinary. The Presidency gave 16 sisters \$1.00 each and asked them to use it in any legitimate manner to increase the amount, and then return it with the increase in three months. They did this and the increase was \$42.40.

Several Branches put on plays and sponsored Branch parties.

A Fashion show, displaying the sewing of the sisters during the year, is a fine goal to work towards. Use live models to display them where possible, and have a fine social evening.

I would like to express my appreciation for your co-operation in the past, especially your kind response to the quilt drive, sending in your Annual Reports, etc. We shipped 189 quilts to Salt Lake, which made us very happy. I hope you are making use of the Hand Book. It will guide you in your work and it offers many suggestions for improvement in your work, as you read it.

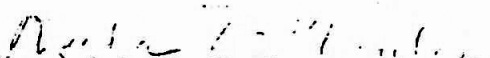
I would like to stress the keeping of accurate records so that your report for 1950 will be a complete record of all of your activities. Be very careful with your money, so no criticism can come to anyone on that score. Bank if possible and have the secretary and president sign the checks.

May the Lord bless you constantly in your responsible position, that through prayer and work you might continue to build up your organization, with the co-operation of all your sisters, and be able to draw the sisters in your Branch closer together, that love and unity may abound in your midst and much good result therefrom.

It is a real joy to work with you. Please give my love to all the lovely sisters in your Branch.

Ever praying for your happiness and success and with my love, I remain,

Sincerely your sister,


(Mrs.) Rula W. Choules
Relief Society President.

List
of R.S.
Members

Elyse Bartlett Pt. 1
Laurie Bartlett
Helen Beibel 208 Union St
Myra Beibel 208 Balentine St
Alberta Curran Pt. 2 -
Irene Curran Pt 2 Box 363 E -
Elsie Friskey 305 States St. -
Bettie Joe ~~Hoppy~~ Harvey Pt 2 Box 416 K
Ellen E. Ladner Pt 1 Box 589
Josephine Ladner Nevada St. Waverland Plms
Laura Ladner Pt. 7 Box 587 -
Verdine Ladner Pt. 2 - Box 452
Mattie Osborne Pt 2 Box 404 -
Jas. Miller Pt 1 Box 594
Lillian Jones Pt. 1 Box 588
Diana Jones Pt 2 - Box -
Iona Wainwright Pt. 2
Henretta Rutherford Pt. 2
Nora Wainwright Pt. 1 Box
Grace Thomas -
Salome Severn - Cedar Point

This Certifies
Ellen Ladner
IS A MEMBER OF
THE RELIEF SOCIETY

of
THE CHURCH OF JESUS CHRIST OF LATTER-DAY SAINTS
and annual membership dues of 50 cents (or its equivalent in
foreign currency) have been paid for the 1968-69 membership year.

Hattisberg Bayou La Croix
STAKE OR MISSION WARD OR BRANCH
DATE 10/1/68 Helene C. Biehl
SECRETARY-TREASURER

This Certifies
Sister Ellen Ladner
IS A MEMBER OF
THE RELIEF SOCIETY

of
THE CHURCH OF JESUS CHRIST OF LATTER-DAY SAINTS
and annual membership dues of 50 cents (or its equivalent in
foreign currency) have been paid for the 1964-65 membership year.

Gay States Bayou La Croix
STAKE OR MISSION WARD OR BRANCH
DATE 10/13/64 Helene C. Biehl
SECRETARY-TREASURER

This Certifies
Ellen Ladner
IS A MEMBER OF
THE RELIEF SOCIETY

of
THE CHURCH OF JESUS CHRIST OF LATTER-DAY SAINTS
and annual membership dues of 50 cents (or its equivalent in
foreign currency) have been paid for the 1967-68 membership year.

Hattisberg Bayou La Croix
STAKE OR MISSION WARD OR BRANCH
DATE Oct 4, 1967 Helene C. Biehl
SECRETARY-TREASURER

This Certifies
Mrs. Ellen Ladner
IS A MEMBER OF
THE RELIEF SOCIETY

of
THE CHURCH OF JESUS CHRIST OF LATTER-DAY SAINTS
and annual membership dues of 50 cents (or its equivalent in
foreign currency) have been paid for the 1965-66 membership year.

Hattisberg Bayou La Croix
STAKE OR MISSION WARD OR BRANCH
DATE Oct 1, 1965 Helene C. Biehl
SECRETARY-TREASURER



THE RELIEF SOCIETY OF THE CHURCH OF JESUS CHRIST OF LATTER DAY SAINTS
BAYOU LACROIX BRANCH
WAVELAND WARD

The gospel of Jesus Christ of Latter Day Saints was first brought to the Hancock area around 1893. The first family to be baptised by the missionaries were George H. Wainwright and his two brothers, Lemule Farve and Jim Farve. They and their descendents were the only members throughout the 1930's and 40's.

Around 1920, they built a small chapel in Edwardsville, Hancock County, approximately 5 miles from Bay St. Louis, MS. There they held Sacrament and Sunday School Meetings. Most of the early members lived in the small community of Bayou la Croix, with few houses about twelve miles from Bay St. Louis. Transportation was mostly by foot or boat, and sometimes by horse and wagon.

In 1934 a missionary conference was held. LeGrand Richards, the Southern States Mission President, organized the Bayou la Croix Relief Society of the Church of Jesus Christ of Latter Day Saints. The sisters rejoiced, for at last they could meet weekly on a regular basis. The meetings were held in an old schoolhouse until it was demolished. The first officers and members were:

Sister Ellen Wainwright Ladner----President----Died June 16, 1969

Sister Laura Wainwright Ladner----1st Counselor

Sister Katie Rutherford----2nd Counselor----Died July 2, 1986

Sister Iona Sones

Sister Viola Farve-----Died May 2, 1970

Sister Edwina Farve-----Died 1944

Sister Rose Nixon Wainwright-----Died 1944

Sister Madah Lixich Farve

Sister Lillian Ladner Sones

Of the first sisters of the Bayou la Croix Branch, three are still living and are still faithful members. The other three remained faithful until death.....

After the schoolhouse was demolished, Relief Society was held in the homes of Sister Ellen W. Ladner and Sister Laura W. Ladner. In the early 1940's the Edwardsville building was moved piece by piece to Bayou la Croix. Construction began and progress went very slow. Relief Society raised money and kept the branch going by having fund raisers, selling hand made items, such as quilts, and rummage sales. They would travel to Gulfport, MS by bus with boxes of articles. When called upon by Southern State Mission for welfare quilts and bedding and articles of clothing, there were always some on hand to send.

The Sisters were few in number, but accomplished much! Their lives were centered on family, church and Relief Society. After the end of World War II, President George Albert Smith made a plea to the sisters throughout the church for quilts to send to the Saints in Europe. Each ward and branch was assigned six quilts to make. With limited resources themselves, these stalwart sisters never hesitated. They sewed a quilt, selling for \$5, to get the money needed for material and supplies. In very few weeks, the six quilts were finished and mailed to the Southern States Mission headquarters in Atlanta, Georgia.

Again they met another challenge cheerfully. In 1947, the General Board Presidency was granted the opportunity to raise half of the money needed for the relief society building they had waited so long for. Each Relief Society Sister was asked to donate \$5.00 by October, 1948. They again responded to the call. When the cornerstones were laid in 1953, their names along with the names of other sisters, were put into it. When the building was dedicated in 1956, how proud they felt to have contributed to it.

Throughout the 1940's the membership remained the same except for the few who were there for a short period of time. In the late 1940's, the chapel in Bayou la Croix was finished enough so meetings other than work meetings, could be held in it. In 1947, electricity was installed. In January, 1950, the chapel was completed except for the Relief Society Room.

With better transportation available, things began to happen in the 1950's. Many of the younger that had moved away began to return. Also, missionaries were sent to the Bay St. Louis-Waveland area, which led to the conversion of more people. The newly converted sisters were very special, with the same love of Visiting Teaching and Compassionate Service as the others. A piano player was converted at last! A piano had been purchased, but there wasn't anyone who could play. A dream of having music was finally a reality. The branch began to buzz with activities. Bazaars were held twice yearly, quilts were made and sold, dinners and ice cream socials were held often. The Relief

Society purchased two air conditioners and a water pump, but they were stolen almost immediately.

In June of 1955, Bayou la Croix became part of the New Orleans Stake, which had been organized by Elder Harold B. Lee and Elder Mark E. Peterson. A Relief Society convention was held in the New Orleans Stake Center yearly. It would last all day with a luncheon at noon. In 1956, we had the privilege of meeting with Sister Velma Simonsen, 1st counselor in the General Presidency, and Sister Brackson of the General Board. In 1957, Sister Belle Spadford, General President, and 1st counselor Marriana Sharp presided over the convention. It was truly a spiritual experience.

In 1958, the Relief Society room was started and shortly finished. In 1961, the Mississippi wards and branches of the New Orleans moved back to the mission in the Hattiesburg, MS district. The Hattiesburg Stake was formed in 1964, and Bayou la Croix became a part of it.

With NASA coming into Pearlington, MS, the membership began to grow even more, mostly because of members moving into the area. In 1965, there were 21 sisters enrolled in Relief Society, with an average attendance of eight or ten sisters and sometimes eight or nine children. The sisters were finally able to purchase a stove, refrigerator, and another pump for water until the pump was stolen again. Most of the time water was carried to the chapel in bottles. Being just a few sisters, their lives revolved around one another.

Just when it seemed things were going nicely, disaster struck. On August 17, 1969, Hurricane Camille hit the Gulf Coast. When it was over, the Relief Society had lost everything. Water had destroyed everything they had: piano, stove, refrigerator, a new sewing machine, two large garbage cans filled with hand made items for the bazaar, and all of their books and pictures. Thankfully, no lives were lost. We were still able to hold meetings at the chapel after it was cleaned, but work day meetings were held at sisters homes in Bay St. Louis and Waveland.

Previously, the members had voted to move the chapel to Waveland, MS. Soon after the Bayou la Croix chapel was condemned and construction began on the new chapel, located on McLaurin and Nicholson Avenue. The first meeting was held in the new chapel on Sunday, February 3, 1974. The sisters would now meet in an air-conditioned building, with a new kitchen, stove, refrigerator, and most importantly-- running water and dressing rooms.

Relief Society was usually held on a Tuesday at 10 A.M. In 1975, a nursery was started for preschool children. In late 1979, Relief Society began having lessons on Sunday mornings before Sunday School, as some sisters could not attend on weekdays. Then in 1980, when the three hour block started, Relief Society had their lessons on Sunday except homemaking meeting was still held once a month, on a Tuesday at 10 A.M.

Waveland Branch was changed to Waveland Ward on November 12, 1980. In April of 1981, the five families that lived in Pearlington, MS, were able to form their own Branch, and in May of the same year were able to move into a house that was loaned to them. They officially became a Branch on September 14, 1981. On January 2, 1983, the Pearlington Branch would resolve and return back to Waveland Ward. In October of 1982, Gulfport Stake was formed and Waveland ward became a part of it.

In January of 1983, the ward was informed that they could start construction on the second phase of the chapel. It was finished and in November of 1983. *It was dedicated 2 Sep 1984*

Since 1934 the Relief Society has grown steadily. The sisters who have since then joined the church are very specially gifted children of our Heavenly Father. With their help Relief Society will progress even more. In the 1990's we are looking forward for our membership to grow and to be able to see the construction and the completion of the final phase of the Waveland Ward.

1934 *** Bayou la Croix Branch Relief Society organized by Legrand Richards as part of Southern States Mission
1949-1955 *** Pensacola District
1955-1961 *** New Orleans Stake
1961-1964 *** Hattiesburg District
1964-1982 *** Hattiesburg Stake
February 3, 1974 *** Moved to Waveland, MS at McLaurin & Nicholson Ave.
November 2, 1980 *** Name changed to Waveland Ward
October 1982 *** Became part of Gulfport, MS Stake
January 1983 *** Received word to start the second phase on the chapel
November 1983 *** Chapel was

*completed - moved
b
Sep 2 1984 dedicated by John Scott
Stake Pres.*

PRESIDENCY OF BAYOU LA CROIX AND WAVELAND WARD RELIEF SOCIETY

- 1934-1960 Ellen Wainwright Ladner, President
Laura Wainwright Ladner, 1st counselor
Katie Rutherford Osbourn, 2nd counselor
- 1960-1964 Virdilee Ladner, President
- 1964-1967 Ellen Wainwright Ladner, President
- 1967-1970 Lillian Ladner Sones, President
- 1970-1975 Helen Biehl, President
- 1975-1977 Hazel White, President
- 1977 March - 1979 March Irene Fricke Cuevas, President
- 1979 March - August 1980 Kay Goul Sones, President
Josie Ladner & Vicki Homer, Educational counselors
Bobby Jo Clark, Homemaking Counselor
- aug 25 Feb 26*
- 1980 - 1984 February 26 Elaine Sones Forrest, President
Jackie Bosley, Educational Counselor
Joellen Ladner Strong, Homemaking Counselor
- 1981-1983 Pearlinton MS Branch
Sister Attaway, President
- 1984 February - 1984 October Elaine Johnson Ladner, President
Kay Goul Sones, Educational Counselor
Rhonda Osbourn Sones, Homemaking Counselor
- 1984 October - 1989 February Cathy Bosley Ginn, President
Liz Bosley Shaw, Janet Bell Hennessey, Lillian Ladner Sones
Educational Counselors
Merl Forrest & Bobby Jo Harvey Clark, Homemaking Counselors
- 1989 February Irma Sones Day, President
Sue Ann Osbourn, Educational Counselor
Bobby Harvey Clark, Sharon Reynolds & Susan Foster
Homemaking Counselors
Rosemary Shubert, Yvonne Bouganim, Lora Day, Secretaries
Josie Ladner, Historian

MARCH 17, 1992

Irma Day, President of Waveland Ward Relief Society, her Counselors, and Board Members are thankful for the cooperation and compassionate services rendered by the sisters of the Waveland Ward. We would like you to recognize what we have accomplished together:

300 meals or more taken to the sick

18 hand made quilts given to new born babies

Helped two families when their homes burned

Taken sisters to doctors and hospitals

Made 50 lap quilts and 25 gingerbread houses for patients at Hotel Reed for Christmas

Brought meals to homes of families when death occurred (12)

Taken care of funerals held at the Chapel

Sacrifice Sale earning \$500 for the budget

We have on hand: 7 welfare tack quilts and pillow cases

We, the Presidency, admonish you,, the Sisters, to use your time wisely and prepare yourself spiritually, emotionally, physically and educationally, so you can become more self reliant, in order to meet the challenges as they come your way. Furthermore, becoming better mothers and daughters of our Heavenly Father in these trying latter days.



Relief Society Sisters of Waveland Ward are 136 in number, and is Still Growing!



RELIEF SOCIETY BIRTHDAYS!
2nd picture is of 78 Birthday



Home of Ellen Ladner, where early church
meetings were held